

Speech Research Laboratory

Speech Production and Perception Research

What is it?

- Application of speech technology to the diagnosis and treatment of speech and hearing disorders

Who is it for?

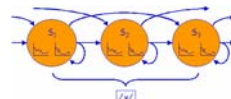
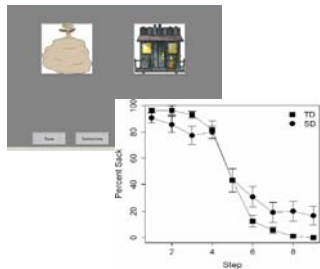
- Kids with speech disorders
- Kids with hearing disorders

How is it done?

Record speech



Analyze speech



Look for patterns

Create software to help speech training

Detection and diagnosis of speech disorders

How can you help us?

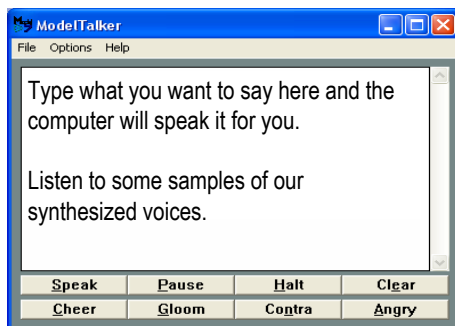
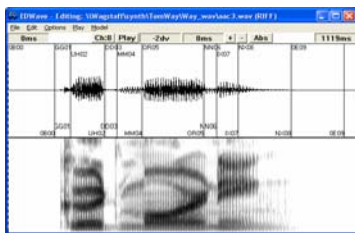
- You can help by being a research participant
- Please contact our lab for more information

Where can I get more info?

- More information is available online at <http://www.asel.udel.edu/speech>

Speech Research Laboratory

ModelTalker Speech Synthesis System



What is it?

- Software for voice banking and speech synthesis

Who is it for?

- People who want to use a personalized communication device

How is it done?

- Record samples of your voice at home or in a clinic
- Upload speech samples to our lab
- Create a personalized voice
- Speak : Unlimited synthetic speech in your own voice

Where can I get it?

- Available online at www.modeltalker.com

The ModelTalker speech synthesis system is supported by NIH in a development grant with our business partner, AgoraNet, Inc.